



MXL

The MXL range of high quality LED exit sign luminaires is perfectly suited to modern architectural environments and available in two sizes for 25m and 30m viewing distances. Offering ease of installation, these luminaires feature a first fix plate. The attractive slim body and legend plate then clips into position.

The safety sign legends can be fitted/changed on site by simply clipping the appropriate sign into the frame. (NB: a complete set of EC & ISO legends are supplied with each luminaire, plus a blank for single side option.) The MXL suspended version can have the legend panel suspended between 15mm to 1m by slipping the wires through the locking clutch bushes. The SELV supply to the LEDs is fed through the suspension wires.

Operation:

The MXL luminaires are available with mains only or Maintained emergency operation. Maintained versions can be used for standard switched mains lighting but will automatically provide emergency lighting in the event of a complete loss of normal mains supply. (Non-maintained operation is available by excluding a switched live supply).

MXL uses the latest high efficiency, white LED's, a "smart" energy efficient charger/driver circuit and long-life **Lithium Iron Phosphate batteries (LiFePO4)**. The luminaires are designed to fully comply with the relevant parts of EN60598.2.22

DALI/Self-Test Options:

The MXL LED luminaires can be specified with integral DALI/Self-Test gear providing automatic Self-Test in accordance with BSEN62034 or fully interoperable DALI operation when connected to a DALI control system.



General Details:

Product	LED Exit Sign (Fixed and Wire Suspended)
Light Source	14 x white LEDs
Luminaire Lumens	N/A
Sign Viewing Distances	25m (MXL/25/M3) 30m (MXL/30/M3)
Construction	Polycarbonate
Geartray	First fix plate
Dimensions	See line drawings
Cable Entry	Top and back (first fix plate)

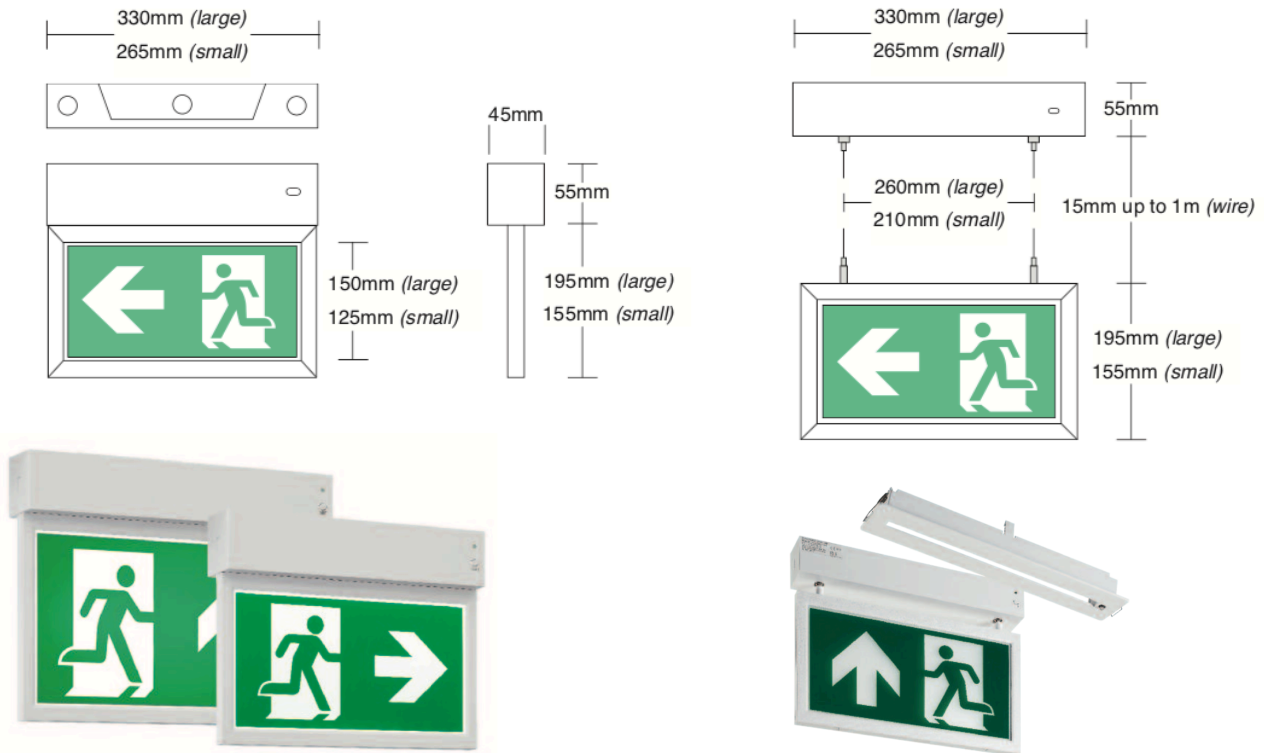
Specification:

Light source	14 x white LEDs
Colour temperature	4500K
Luminaire Lumens	N/A
IP Rating	IP40
Ambient temperature (Ta)	25°C
Insulation Class	Class II
Supply voltage	230V ~ 50Hz
Supply power (Maintained)	2.6W (small version) & 3.1W (large version)
Supply power (Non-maintained)	0.8W
Charge power (typical)	0.7W
Battery (LiFePO4)	6.4V 600mAh (standard), 3.2V 3.2Ah (DALI)
Weight	2.5kg (max.)
Warranty	3 years (1 year on the battery)

Wall/Ceiling Mounting with optional Wire Suspension:

MXL Exit Signs are suitable for Wall/Ceiling mounting and offer Wire Suspended versions. Mounting is achieved via a first fix plate which has fixing holes suitable for wall or ceiling mounting.

The Wire Suspended versions utilise parallel suspension wires that allow the height of the legend to be easily set by the use of two locking clutch bush mechanisms.



Part Number	Description
MXL-25M/LTM/M3 (25m Viewing Distance)	Wall/Ceiling Mounted, 3 hour duration, Maintained, Switched Maintained, Non-Maintained with complete set of EC and ISO format Legend Panels (right/left/down/up)
MXL-25MS/LTM/M3 (25m Viewing Distance)	Wire Suspended, 3 hour duration, Maintained, Switched Maintained, Non-Maintained with complete set of EC and SO format Legend Panels (right/left/down/up)
MXL-30M/LTM/M3 (30m Viewing Distance)	Wall/Ceiling Mounted, 3 hour duration, Maintained, Switched Maintained, Non-Maintained with complete set of EC and ISO format Legend Panels (right/left/down/up)
MXL-30MS/LTM/M3 (30m Viewing Distance)	Wire Suspended, 3 hour duration, Maintained, Switched Maintained, Non-Maintained with complete set of EC and SO format Legend Panels (right/left/down/up)
Options	
MXL-30M/LTM/DALI	Wall/Ceiling Mounted Dali Operation (only available on MXL-30)
MXL-30MS/LTM/DALI	Wire Suspended Dali Operation (only available on MXL-30)
MXL-25M-RB	Recessing Bracket for recessed ceiling application
MXL-30M-RB	Recessing Bracket for recessed ceiling application
Legends	
LEGENDS	Complete set of EC and ISO format legend panels (right/left/down/up)