

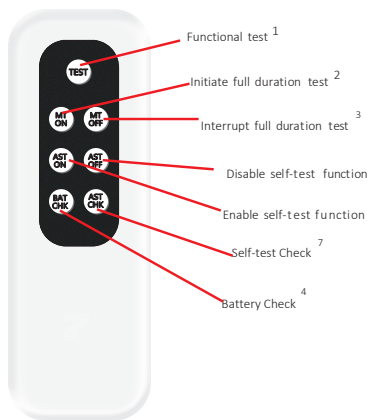
FXARC ADVANCED REMOTE CONTROL

FXARC is a multi function device suitable for the MT and AST variants of luminaires from our FX Lithium range of emergency lighting products and our standard/bespoke led products fitted with this technology. Our FXARC remote control provides the person responsible for the emergency lighting with the means to check battery life and self-test status. It can also be used to carry out functional and full duration tests.

Key Benefits:

- No 'Test Key Switches' need to be installed; all tests can be carried out using the remote.
- No need to locate test key switches, which are sometimes not where expected
- Luminaires can be tested individually without cutting the power to numerous luminaires
- AST variants can be switched to manual mode if required, where self-test is not desirable.
- Battery life can be measured to assist forward planning of maintenance

Remote Control Functions:



FUNCTIONS FOR "self-test" VERSIONS:

1. Press "TEST" to carry out a Functional Test
2. Press "MT ON" to initiate a Full Duration Test*
3. Press "MT OFF" to interrupt Full Duration Test
4. Press "BAT CHK" to check status of battery's health.**
5. Press "AST OFF" to disable self-test function
6. Press "AST ON" to enable self-test function
7. Press "AST CHK" to verify status of self-test function

After each button press the indicator will flash GREEN/RED to acknowledge the command

* Note that when the Full Duration Test is completed the batteries require up to 8 hours to be re-charged again.

** Note that battery status is recorded and updated after full duration test is completed.



- = Off
- = On
- = Slow flash 0.5Hz
- = Normal flash 1Hz (once/second)
- = Fast flash 2Hz (twice/second)

Flashing Code for Self-Test check (Function-7)

RED/GREEN LED Indicator	1x Green/Red 	Self-test enabled
	2x Green/Red 	Self-test disabled

Flashing Code for Fault condition (Function-1)

GREEN/RED LED Indicator		Status OK - battery charged
		Battery charging
		Battery disconnected/duration test fail
		Test in progress
		Battery outside temperature range
		Load/light source fault

Flashing Code for Battery Health Check (Function-4)

GREEN/RED LED Indicator	Flashing Sequence	Battery Status (emergency lighting duration)	Approx. Capacity Reserve
	4x Green/Red 	Battery not yet tested (status will be available after first full duration test)	-
	1x Green/Red 	duration > 3hr 30min	Excess capacity > 16%
	2x Green/Red 	3hr 15min < duration < 3hr 30min	Excess capacity < 16% > 8%
	3x Green/Red 	3hr < EM duration < 3hr 15min	Excess capacity < 8% > 0%